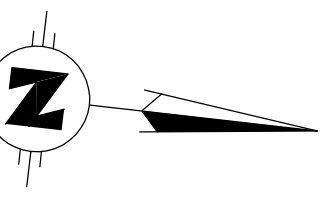


APPROVED UNDER SECTION 51 OF THE PLANNING ACT THIS DAY OF _____, 20__.



BYRON BASELINE ROAD

"CITY OF LONDON"

PLAN 33M-

I CERTIFY THAT THIS PLAN IS REGISTERED IN THE LAND REGISTRY OFFICE FOR THE LAND TITLES DIVISION OF MIDDLESEX AT _____ O'CLOCK ON THE _____ DAY OF _____, 20__ AND ENTERED IN THE PARCEL REGISTER FOR PLAN _____ AND THE REQUIRED CONSENTS ARE REGISTERED AS PLAN DOCUMENT No. _____

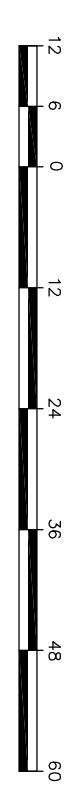
DER. LAND REGISTRAR

THIS PLAN IS COMPRISED OF ALL OF P.L.N. 08420-0547 (L1)

PLAN OF SUBDIVISION
OF PART OF
LOT 48, CONCESSION 1
(GEOGRAPHIC TOWNSHIP OF WESTMINSTER)
IN THE
CITY OF LONDON
COUNTY OF MIDDLESEX
SCALE 1:750 (METRIC)

J. ANDREW SMITH
ONTARIO LAND SURVEYOR

(SCALE IN METRES)



STATION	NORTHING	EASTING
028944091	4,755,556.893	472,148.677
028944092	4,754,668.736	471,468.415
A	4734828.626	471463.497
B	4734874.261	471803.659

BEARINGS ARE U.T.M. GRID (NAD83 REFERENCE), DERIVED FROM STATION NO. 028944091 AND STATION NO. 028944092 AND ARE REFERRED TO THE CENTRAL MERIDIAN OF 100 WEST LONGITUDE, 20NE 17.

LINEAR VALUES SHOWN ON THIS PLAN ARE ADJUSTED GROUND LEVEL DISTANCES AND CAN BE CONVERTED TO GRID DISTANCES BY MULTIPLYING BY A COMBINED SCALE FACTOR OF 0.999964774.

LEGEND:

- DENOTES SURVEY MONUMENT SET
- SIB DENOTES STANDARD IRON BAR
- SIB DENOTES SHORT STANDARD IRON BAR
- IB DENOTES IRON BAR
- RIB DENOTES IRON BAR
- OC DENOTES 16mm DIAUTER ROUND IRON BAR
- CC DENOTES COLD CROSS
- CU DENOTES CUP
- UN DENOTES UNKNOWN
- WMS DENOTES WELDED
- CD DENOTES COLD, DIETZ, O.L.S.'s
- AM DENOTES ARCHBLD., GRAY & MCKAY, O.L.S.'s
- P1 DENOTES PLAN 33R-14664
- P2 DENOTES PLAN 33M-514

MONUMENT NOTE:
ALL SET MONUMENTS SHOWN HEREON ARE IRON BARS (IB 9)
UNLESS OTHERWISE NOTED.

OWNER'S CERTIFICATE:

THIS IS TO CERTIFY THAT:
1) LOTS 1 to 60, BOTH INCLUDING BLOCKS 62 AND 63, THE STREETS, NAMELY BRAYFORD CRESCENT, IRONWOOD ROAD, TISON WALK AND WICKERSON GATE, BLOCKS 65, 66, 67 AND 68, THE WALKWAY, NAMELY BLOCK 61 HAVE BEEN Laid OUT IN ACCORDANCE WITH MY INSTRUCTIONS.
2) THE STREETS, STREET WIDENING & WALKWAY ARE HEREBY DEDICATED TO THE CONVEYANCE OF THE CITY OF LONDON AS PUBLIC HIGHWAY.
KAPE DEVELOPMENTS LTD.

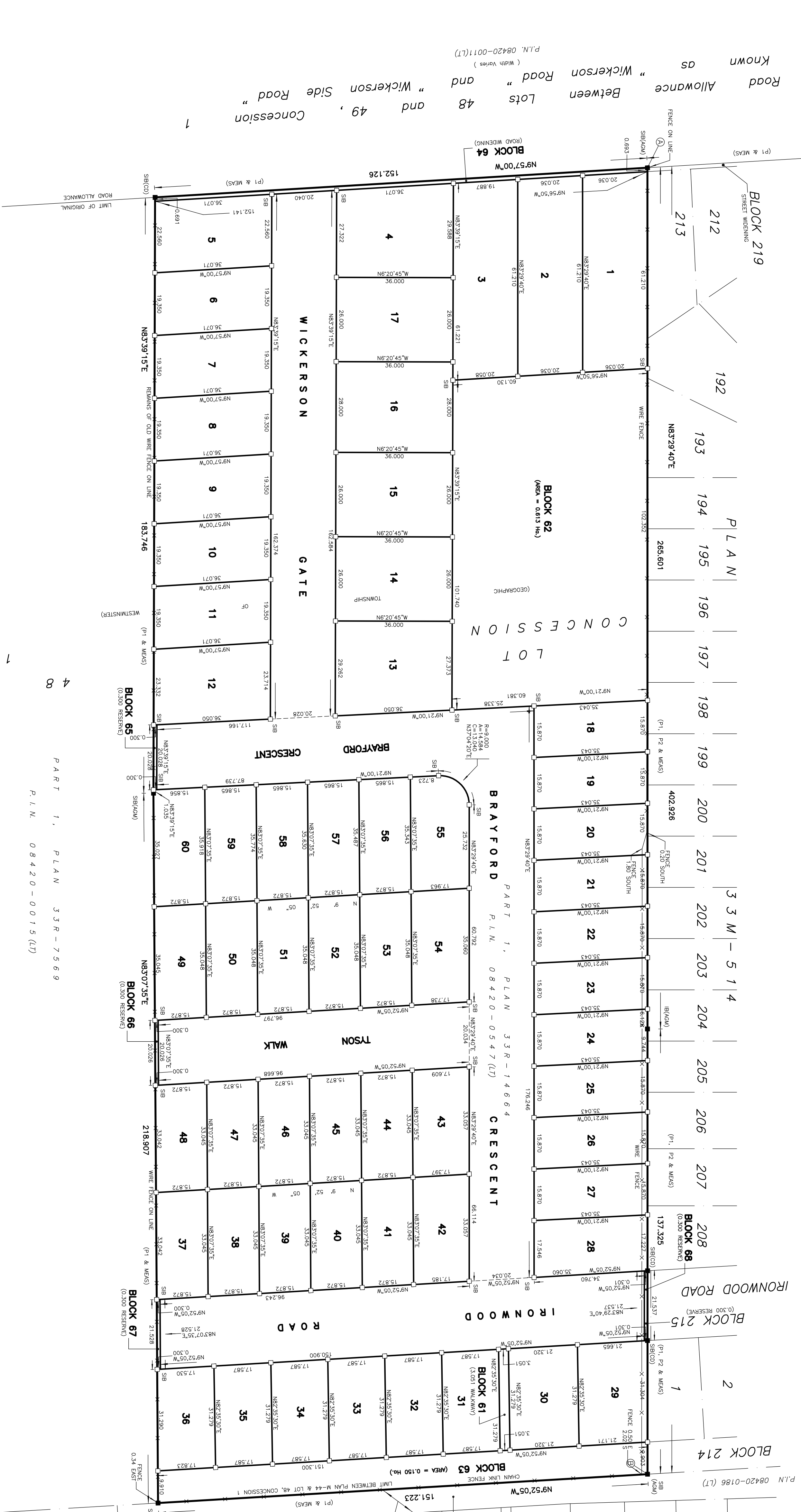
LONDON, ONTARIO
ANTONIO ARBANTIS - PRESIDENT
I HAVE THE AUTHORITY TO BIND THE CORPORATION

SURVEYOR'S CERTIFICATE:

I CERTIFY THAT:
(1) THIS SURVEY AND PLAN ARE CORRECT AND IN ACCORDANCE WITH THE SURVEY ACT, THE SURVEYORS ACT AND THE LAND TITLES ACT AND THE REGULATIONS MADE UNDER THEM.
(2) THE SURVEY WAS COMPLETED ON THE _____

LONDON, ONTARIO
J. ANDREW SMITH
ONTARIO LAND SURVEYOR

METRIC: DISTANCES SHOWN ON THIS PLAN ARE IN METRES AND CAN BE CONVERTED TO FEET BY DIVIDING BY 0.3048



PART 1, PLAN 33R-7569
P.L.N. 08420-0015 (L1)

PART 1, PLAN 33R-14664
P.L.N. 08420-0547 (L1)

PART 1, PLAN 33R-2526
P.L.N. 08420-0186 (L1)

PART 1, PLAN 33R-14664
P.L.N. 08420-0547 (L1)

PART 1, PLAN 33R-2526
P.L.N. 08420-0186 (L1)

PART 1, PLAN 33R-7569
P.L.N. 08420-0015 (L1)

PART 1, PLAN 33R-14664
P.L.N. 08420-0547 (L1)

PART 1, PLAN 33R-2526
P.L.N. 08420-0186 (L1)

PART 1, PLAN 33R-7569
P.L.N. 08420-0015 (L1)

PART 1, PLAN 33R-14664
P.L.N. 08420-0547 (L1)

PART 1, PLAN 33R-2526
P.L.N. 08420-0186 (L1)

PART 1, PLAN 33R-7569
P.L.N. 08420-0015 (L1)

PART 1, PLAN 33R-14664
P.L.N. 08420-0547 (L1)

PART 1, PLAN 33R-2526
P.L.N. 08420-0186 (L1)

PART 1, PLAN 33R-7569
P.L.N. 08420-0015 (L1)

PART 1, PLAN 33R-14664
P.L.N. 08420-0547 (L1)

PART 1, PLAN 33R-2526
P.L.N. 08420-0186 (L1)

PART 1, PLAN 33R-7569
P.L.N. 08420-0015 (L1)

PART 1, PLAN 33R-14664
P.L.N. 08420-0547 (L1)

PART 1, PLAN 33R-2526
P.L.N. 08420-0186 (L1)

PART 1, PLAN 33R-7569
P.L.N. 08420-0015 (L1)

PART 1, PLAN 33R-14664
P.L.N. 08420-0547 (L1)

PART 1, PLAN 33R-2526
P.L.N. 08420-0186 (L1)

PART 1, PLAN 33R-7569
P.L.N. 08420-0015 (L1)

PART 1, PLAN 33R-14664
P.L.N. 08420-0547 (L1)

PART 1, PLAN 33R-2526
P.L.N. 08420-0186 (L1)

PART 1, PLAN 33R-7569
P.L.N. 08420-0015 (L1)

PART 1, PLAN 33R-14664
P.L.N. 08420-0547 (L1)

PART 1, PLAN 33R-2526
P.L.N. 08420-0186 (L1)

PART 1, PLAN 33R-7569
P.L.N. 08420-0015 (L1)

PART 1, PLAN 33R-14664
P.L.N. 08420-0547 (L1)

PART 1, PLAN 33R-2526
P.L.N. 08420-0186 (L1)

PART 1, PLAN 33R-7569
P.L.N. 08420-0015 (L1)

PART 1, PLAN 33R-14664
P.L.N. 08420-0547 (L1)

PART 1, PLAN 33R-2526
P.L.N. 08420-0186 (L1)

PART 1, PLAN 33R-7569
P.L.N. 08420-0015 (L1)

PART 1, PLAN 33R-14664
P.L.N. 08420-0547 (L1)

PART 1, PLAN 33R-2526
P.L.N. 08420-0186 (L1)

PART 1, PLAN 33R-7569
P.L.N. 08420-0015 (L1)

PART 1, PLAN 33R-14664
P.L.N. 08420-0547 (L1)

PART 1, PLAN 33R-2526
P.L.N. 08420-0186 (L1)

PART 1, PLAN 33R-7569
P.L.N. 08420-0015 (L1)

PART 1, PLAN 33R-14664
P.L.N. 08420-0547 (L1)

PART 1, PLAN 33R-2526
P.L.N. 08420-0186 (L1)

PART 1, PLAN 33R-7569
P.L.N. 08420-0015 (L1)

PART 1, PLAN 33R-14664
P.L.N. 08420-0547 (L1)

PART 1, PLAN 33R-2526
P.L.N. 08420-0186 (L1)

PART 1, PLAN 33R-7569
P.L.N. 08420-0015 (L1)

PART 1, PLAN 33R-14664
P.L.N. 08420-0547 (L1)

PART 1, PLAN 33R-2526
P.L.N. 08420-0186 (L1)

PART 1, PLAN 33R-7569
P.L.N. 08420-0015 (L1)

PART 1, PLAN 33R-14664
P.L.N. 08420-0547 (L1)

PART 1, PLAN 33R-2526
P.L.N. 08420-0186 (L1)

PART 1, PLAN 33R-7569
P.L.N. 08420-0015 (L1)

PART 1, PLAN 33R-14664
P.L.N. 08420-0547 (L1)

PART 1, PLAN 33R-2526
P.L.N. 08420-0186 (L1)

PART 1, PLAN 33R-7569
P.L.N. 08420-0015 (L1)

PART 1, PLAN 33R-14664
P.L.N. 08420-0547 (L1)

PART 1, PLAN 33R-2526
P.L.N. 08420-0186 (L1)

PART 1, PLAN 33R-7569
P.L.N. 08420-0015 (L1)

PART 1, PLAN 33R-14664
P.L.N. 08420-0547 (L1)

PART 1, PLAN 33R-2526
P.L.N. 08420-0186 (L1)

PART 1, PLAN 33R-7569
P.L.N. 08420-0015 (L1)

PART 1, PLAN 33R-14664
P.L.N. 08420-0547 (L1)

PART 1, PLAN 33R-2526
P.L.N. 08420-0186 (L1)

PART 1, PLAN 33R-7569
P.L.N. 08420-0015 (L1)

PART 1, PLAN 33R-14664
P.L.N. 08420-0547 (L1)

PART 1, PLAN 33R-2526
P.L.N. 08420-0186 (L1)

PART 1, PLAN 33R-7569
P.L.N. 08420-0015 (L1)

PART 1, PLAN 33R-14664
P.L.N. 08420-0547 (L1)

PART 1, PLAN 33R-2526
P.L.N. 08420-0186 (L1)

PART 1, PLAN 33R-7569
P.L.N. 08420-0015 (L1)

PART 1, PLAN 33R-14664
P.L.N. 08420-0547 (L1)

PART 1, PLAN 33R-2526
P.L.N. 08420-0186 (L1)

PART 1, PLAN 33R-7569
P.L.N. 08420-0015 (L1)

PART 1, PLAN 33R-14664
P.L.N. 08420-0547 (L1)

PART 1, PLAN 33R-2526
P.L.N. 08420-0186 (L1)

PART 1, PLAN 33R-7569
P.L.N. 08420-0015 (L1)

PART 1, PLAN 33R-14664
P.L.N. 08420-0547 (L1)

PART 1, PLAN 33R-2526
P.L.N. 08420-0186 (L1)

PART 1, PLAN 33R-7569
P.L.N. 08420-0015 (L1)

PART 1, PLAN 33R-14664
P.L.N. 08420-0547 (L1)

PART 1, PLAN 33R-2526
P.L.N. 08420-0186 (L1)

PART 1, PLAN 33R-7569
P.L.N. 08420-0015 (L1)

PART 1, PLAN 33R-14664
P.L.N. 08420-0547 (L1)

PART 1, PLAN 33R-2526
P.L.N. 08420-0186 (L1)

PART 1, PLAN 33R-7569
P.L.N. 08420-0015 (L1)

PART 1, PLAN 33R-14664
P.L.N. 08420-0547 (L1)

PART 1, PLAN 33R-2526
P.L.N. 08420-0186 (L1)

PART 1, PLAN 33R-7569
P.L.N. 08420-0015 (L1)

PART 1, PLAN 33R-14664
P.L.N. 08420-0547 (L1)

PART 1, PLAN 33R-2526
P.L.N. 08420-0186 (L1)

PART 1, PLAN 33R-7569
P.L.N. 08420-0015 (L1)

PART 1, PLAN 33R-14664
P.L.N. 08420-0547 (L1)

PART 1, PLAN 33R-2526
P.L.N. 08420-0186 (L1)

PART 1, PLAN 33R-7569
P.L.N. 08420-0015 (L1)

PART 1, PLAN 33R-14664
P.L.N. 08420-0547 (L1)

PART 1, PLAN 33R-2526
P.L.N. 08420-0186 (L1)

PART 1, PLAN 33R-7569
P.L.N. 08420-0015 (L1)

PART 1, PLAN 33R-14664
P.L.N. 08420-0547 (L1)

PART 1, PLAN 33R-2526
P.L.N. 08420-0186 (L1)

PART 1, PLAN 33R-7569
P.L.N. 08420-0015 (L1)

PART 1, PLAN 33R-14664
P.L.N. 08420-0547 (L1)

PART 1, PLAN 33R-2526
P.L.N. 08420-0186 (L1)

PART 1, PLAN 33R-7569
P.L.N. 08420-0015 (L1)

PART 1, PLAN 33R-14664
P.L.N. 08420-0547 (L1)

PART 1, PLAN 33R-2526
P.L.N. 08420-0186 (L1)

PART 1, PLAN 33R-7569
P.L.N. 08420-0015 (L1)

PART 1, PLAN 33R-14664
P.L.N. 08420-0547 (L1)

PART 1, PLAN 33R-2526
P.L.N. 08420-0186 (L1)

PART 1, PLAN 33R-7569
P.L.N. 08420-0015 (L1)

PART 1, PLAN 33R-14664
P.L.N. 08420-0547 (L1)

PART 1, PLAN 33R-2526
P.L.N. 08420-0186 (L1)

PART 1, PLAN 33R-7569
P.L.N. 08420-0015 (L1)

PART 1, PLAN 33R-14664
P.L.N. 08420-0547 (L1)

PART 1, PLAN 33R-2526
P.L.N. 08420-0186 (L1)

PART 1, PLAN 33R-7569
P.L.N. 08420-0015 (L1)

PART 1, PLAN 33R-14664
P.L.N. 08420-0547 (L1)

PART 1, PLAN 33R-2526
P.L.N. 08420-0186 (L1)

PART 1, PLAN 33R-7569
P.L.N. 08420-0015 (L1)

PART 1, PLAN 33R-14664
P.L.N. 08420-0547 (L1)

PART 1, PLAN 33R-2526
P.L.N. 08420-0186 (L1)

PART 1, PLAN 33R-7569
P.L.N. 08420-0015 (L1)

PART 1, PLAN 33R-14664
P.L.N. 08420-0547 (L1)

PART 1, PLAN 33R-2526
P.L.N. 08420-0186 (L1)

PART 1, PLAN 33R-7569
P.L.N. 08420-0015 (L1)

PART 1, PLAN 33R-14664
P.L.N. 08420-0547 (L1)

PART 1, PLAN 33R-2526
P.L.N. 08420-0186 (L1)

PART 1, PLAN 33R-7569
P.L.N. 08420-0015 (L1)

PART 1, PLAN 33R-14664
P.L.N. 08420-0547 (L1)

PART 1, PLAN 33R-2526
P.L.N. 08420-0186 (L1)

PART 1, PLAN 33R-7569
P.L.N. 08420-0015 (L1)

PART 1, PLAN 33R-14664
P.L.N. 08420-0547 (L1)

PART 1, PLAN 33R-2526
P.L.N. 08420-0186 (L1)

PART 1, PLAN 33R-7569
P.L.N. 08420-0015 (L1)

PART 1, PLAN 33R-14664
P.L.N. 08420-0547 (L1)

PART 1, PLAN 33R-2526
P.L.N. 08420-0186 (L1)

PART 1, PLAN 33R-7569
P.L.N. 08420-0015 (L1)

PART 1, PLAN 33R-14664
P.L.N. 08420-0547 (L1)

PART 1, PLAN 33R-2526
P.L.N. 08420-0186 (L1)

PART 1, PLAN 33R-7569
P.L.N. 08420-0015 (